

## 24h

PERRIER Jerome

M 1969  
V1

94

Numero de license :

Vétéran 1 Homme

Rang 63 Distance 127 615 Nb tours 124 meilleur temps 00:06:14 Dernier 19

Nb tours	Temps	Distance	Temps au tours	Distance du tour	Vitesse au tour	Place
1	00:06:58	1 048	00:06:58	1 048	9,00	47
2	00:13:43	2 077	00:06:44	1 029	9,10	50
3	00:20:22	3 106	00:06:39	1 029	9,20	48
4	00:26:59	4 135	00:06:37	1 029	9,30	49
5	00:33:46	5 164	00:06:46	1 029	9,10	54
6	00:40:09	6 193	00:06:23	1 029	9,60	51
7	00:46:33	7 222	00:06:24	1 029	9,60	47
8	00:52:58	8 251	00:06:24	1 029	9,60	49
9	00:59:18	9 280	00:06:20	1 029	9,70	50
10	01:05:45	10 309	00:06:27	1 029	9,50	46
11	01:12:09	11 338	00:06:23	1 029	9,60	48
12	01:18:31	12 367	00:06:22	1 029	9,60	48
13	01:25:14	13 396	00:06:43	1 029	9,10	49
14	01:31:32	14 425	00:06:17	1 029	9,80	48
15	01:38:01	15 454	00:06:29	1 029	9,50	49
16	01:45:12	16 483	00:07:10	1 029	8,60	51
17	01:51:34	17 512	00:06:22	1 029	9,60	52
18	01:58:40	18 541	00:07:06	1 029	8,60	55
19	02:05:05	19 570	00:06:24	1 029	9,60	55
20	02:11:50	20 599	00:06:44	1 029	9,10	53
21	02:18:26	21 628	00:06:36	1 029	9,30	53
22	02:25:32	22 657	00:07:06	1 029	8,60	55
23	02:31:59	23 686	00:06:26	1 029	9,50	54
24	02:39:55	24 715	00:07:55	1 029	7,70	58
25	02:46:34	25 744	00:06:39	1 029	9,20	58
26	02:53:38	26 773	00:07:04	1 029	8,70	57
27	03:01:20	27 802	00:07:42	1 029	8,00	56
28	03:17:42	28 831	00:16:21	1 029	3,70	68
29	04:14:27	29 860	00:56:44	1 029	1,00	99
30	04:23:18	30 889	00:08:51	1 029	6,90	99

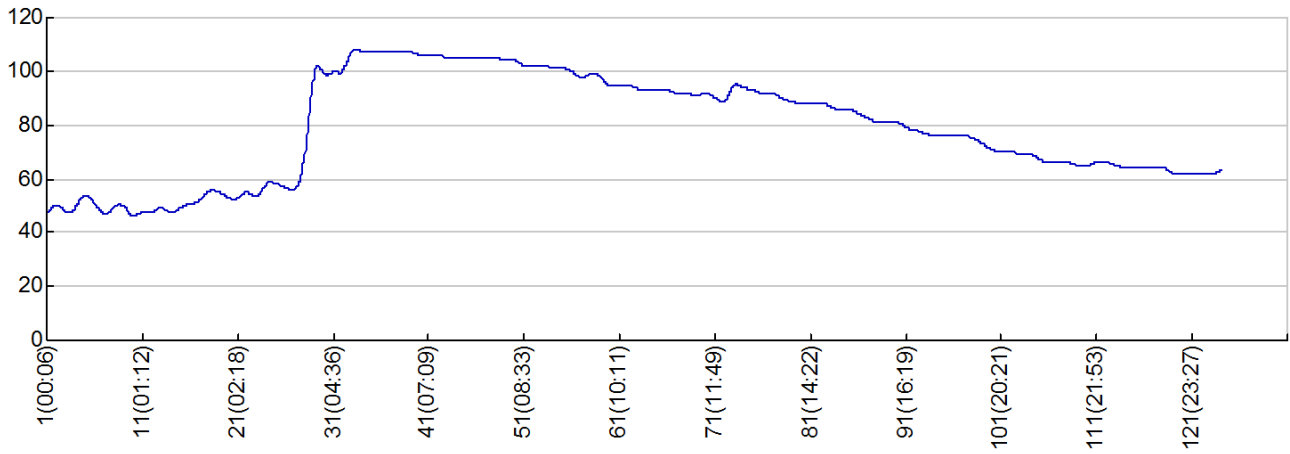


Nb tours	Temps	Distance	Temps au tours	Distance du tour	Vitesse au tour	Place
31	04:36:07	31 918	00:12:49	1 029	4,80	100
32	04:46:34	32 947	00:10:26	1 029	5,90	100
33	05:54:40	33 976	01:08:06	1 029	0,90	107
34	06:04:05	35 005	00:09:24	1 029	6,50	107
35	06:12:27	36 034	00:08:22	1 029	7,30	107
36	06:23:59	37 063	00:11:31	1 029	5,30	107
37	06:35:10	38 092	00:11:10	1 029	5,50	107
38	06:44:22	39 121	00:09:12	1 029	6,70	107
39	06:51:52	40 150	00:07:29	1 029	8,20	107
40	07:02:04	41 179	00:10:12	1 029	6,00	106
41	07:09:40	42 208	00:07:35	1 029	8,10	106
42	07:16:10	43 237	00:06:30	1 029	9,40	106
43	07:28:48	44 266	00:12:37	1 029	4,80	105
44	07:36:22	45 295	00:07:34	1 029	8,10	105
45	07:43:46	46 324	00:07:23	1 029	8,30	105
46	07:50:47	47 353	00:07:01	1 029	8,70	105
47	08:03:17	48 382	00:12:30	1 029	4,90	105
48	08:10:43	49 411	00:07:25	1 029	8,30	105
49	08:17:17	50 440	00:06:34	1 029	9,40	104
50	08:26:26	51 469	00:09:09	1 029	6,70	104
51	08:33:57	52 498	00:07:31	1 029	8,20	102
52	08:41:24	53 527	00:07:27	1 029	8,20	102
53	08:54:27	54 556	00:13:02	1 029	4,70	102
54	09:05:13	55 585	00:10:46	1 029	5,70	101
55	09:11:32	56 614	00:06:18	1 029	9,70	101
56	09:19:05	57 643	00:07:33	1 029	8,10	100
57	09:29:53	58 672	00:10:47	1 029	5,70	98
58	09:41:38	59 701	00:11:44	1 029	5,20	99
59	09:52:37	60 730	00:10:59	1 029	5,60	98
60	10:01:53	61 759	00:09:16	1 029	6,60	95
61	10:11:52	62 788	00:09:58	1 029	6,10	95
62	10:18:59	63 817	00:07:07	1 029	8,60	95
63	10:26:42	64 846	00:07:43	1 029	7,90	93
64	10:34:58	65 875	00:08:15	1 029	7,40	93
65	10:48:04	66 904	00:13:06	1 029	4,70	93
66	10:55:35	67 933	00:07:30	1 029	8,20	93
67	11:03:52	68 962	00:08:17	1 029	7,40	92

Nb tours	Temps	Distance	Temps au tours	Distance du tour	Vitesse au tour	Place
68	11:16:24	69 991	00:12:32	1 029	4,90	92
69	11:27:31	71 020	00:11:06	1 029	5,50	91
70	11:39:08	72 049	00:11:37	1 029	5,30	92
71	11:49:43	73 078	00:10:34	1 029	5,80	90
72	12:00:04	74 107	00:10:20	1 029	5,90	89
73	13:14:54	75 136	01:14:50	1 029	0,80	95
74	13:23:57	76 165	00:09:02	1 029	6,80	94
75	13:30:55	77 194	00:06:58	1 029	8,80	93
76	13:37:10	78 223	00:06:14	1 029	9,80	92
77	13:43:30	79 252	00:06:19	1 029	9,70	92
78	13:49:51	80 281	00:06:21	1 029	9,70	90
79	13:58:20	81 310	00:08:29	1 029	7,20	89
80	14:11:41	82 339	00:13:21	1 029	4,60	88
81	14:22:30	83 368	00:10:48	1 029	5,70	88
82	14:32:25	84 397	00:09:54	1 029	6,20	88
83	14:43:16	85 426	00:10:50	1 029	5,60	87
84	14:54:02	86 455	00:10:46	1 029	5,70	86
85	15:04:50	87 484	00:10:47	1 029	5,70	86
86	15:16:16	88 513	00:11:25	1 029	5,40	84
87	15:27:40	89 542	00:11:24	1 029	5,40	83
88	15:37:30	90 571	00:09:49	1 029	6,20	81
89	15:47:35	91 600	00:10:04	1 029	6,10	81
90	16:07:38	92 629	00:20:03	1 029	3,00	81
91	16:19:58	93 658	00:12:19	1 029	5,00	79
92	16:31:08	94 687	00:11:10	1 029	5,50	78
93	16:42:03	95 716	00:10:54	1 029	5,60	77
94	16:53:56	96 745	00:11:52	1 029	5,10	76
95	17:05:08	97 774	00:11:12	1 029	5,50	76
96	17:16:34	98 803	00:11:25	1 029	5,40	76
97	17:27:42	99 832	00:11:08	1 029	5,50	76
98	17:38:52	100 861	00:11:09	1 029	5,50	75
99	20:02:40	101 890	02:23:48	1 029	0,40	73
100	20:14:02	102 919	00:11:22	1 029	5,40	71
101	20:21:09	103 948	00:07:07	1 029	8,60	70
102	20:27:32	104 977	00:06:22	1 029	9,60	70
103	20:34:38	106 006	00:07:05	1 029	8,70	69
104	20:42:18	107 035	00:07:39	1 029	8,00	69

Nb tours	Temps	Distance	Temps au tours	Distance du tour	Vitesse au tour	Place
105	20:50:54	108 064	00:08:36	1 029	7,10	67
106	20:58:25	109 093	00:07:30	1 029	8,20	66
107	21:12:33	110 122	00:14:07	1 029	4,30	66
108	21:22:00	111 151	00:09:27	1 029	6,50	66
109	21:33:06	112 180	00:11:05	1 029	5,50	65
110	21:43:09	113 209	00:10:03	1 029	6,10	65
111	21:53:09	114 238	00:10:00	1 029	6,10	66
112	22:02:54	115 267	00:09:44	1 029	6,30	66
113	22:11:26	116 296	00:08:32	1 029	7,20	65
114	22:20:37	117 325	00:09:10	1 029	6,70	64
115	22:30:55	118 354	00:10:17	1 029	5,90	64
116	22:40:47	119 383	00:09:51	1 029	6,20	64
117	22:49:26	120 412	00:08:39	1 029	7,10	64
118	22:57:25	121 441	00:07:58	1 029	7,70	64
119	23:05:07	122 470	00:07:41	1 029	8,00	62
120	23:17:13	123 499	00:12:06	1 029	5,10	62
121	23:27:33	124 528	00:10:20	1 029	5,90	62
122	23:37:58	125 557	00:10:25	1 029	5,90	62
123	23:48:25	126 586	00:10:27	1 029	5,90	62
124	23:57:56	127 615	00:09:30	1 029	6,40	63

place au tour



Vitesse au tour

